

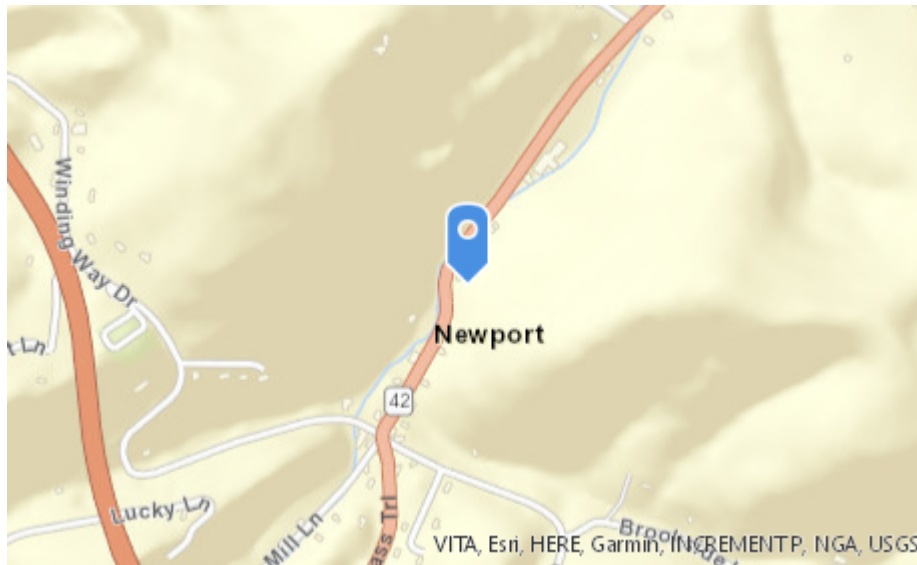
# Mountain Valley Watch

## Erosion Control Survey

<b>Survey Date</b>	08/02/2018 7:30 PM
<b>Construction Stage</b>	active construction

### Location

Lat: 37.29679 Lon: -80.49351



### Construction Site Conditions

evidence of sediment leaving the construction site, evidence of erosion at the site  
Sediment plume, Stream water discolored, Increased sediment deposition

Aerial





Add Photo



Add Photo



Add Photo





Additional Pictures



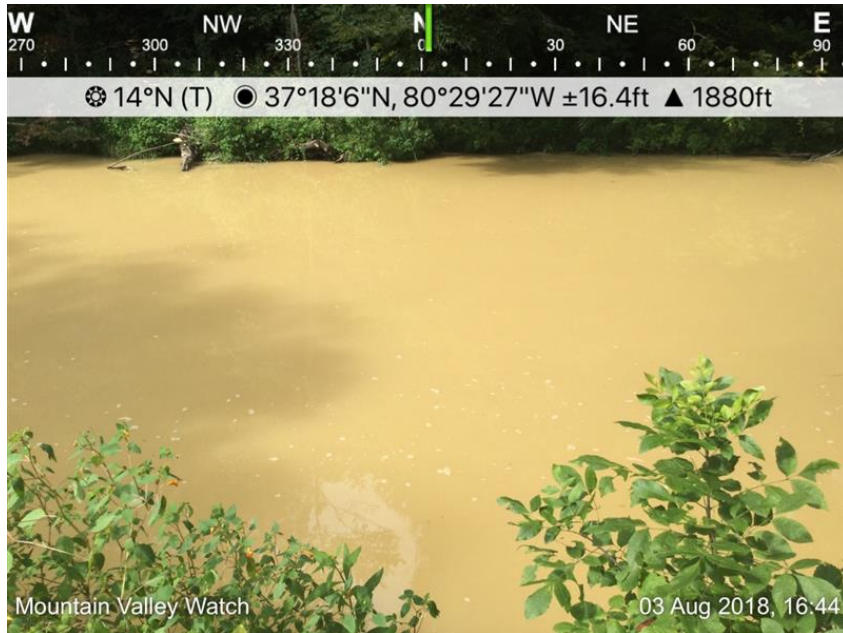




## Additional Notes

General conditions of Sinking Creek on August 3, 2018 downstream from several areas of runoff into tributaries which run into Sinking Creek and less than a mile upstream from USGS data collection point on Sinking Creek.

## Add Photo



## Add Photo





### Add Photo



### Add Photo

